

Signify Classified - Internal  
Cooper Lighting Solutions Photometric Lab  
1121 Highway 74 South  
Peachtree City, GA 30269



Scaled data based on original data using  
LM-79-08 Approved Method: Electrical and Photometric Measurements of Solid-  
State Lighting Products

Test Report Prepared for  
Cooper Lighting Solutions  
(formerly Eaton)

Brand: McGRAW-EDISON

Report Number: P317042

Luminaire Tested: **GLEON-SA8B-727-U-RW**

Issue Date: 3/3/2020

**Test Information**

Test Method: LM-79-08  
Report Number: P317042  
TEST IS SCALED FROM IESNA LM-79-08 TEST DATA (G2-1903-205-7)  
Test Lab: INNOVATION CENTER  
Issue Date: 3/3/2020  
Manufacturer: COOPER LIGHTING SOLUTIONS (FORMERLY EATON)  
Product Line: McGRAW-EDISON  
Catalog Number: GLEON-SA8B-727-U-RW  
Description: GALLEON AREA AND ROADWAY LUMINAIRE  
(8) 70 CRI, 2700K, 800mA LIGHTSQUARES WITH 16 LEDS EACH AND RECTANGULAR WIDE OPTICS  
Light Source: -  
Ballast/Driver: ELECTRONIC DRIVER

**Summary**

Lumens per Lamp: N/A  
Luminaire Lumens: 39152 lumens  
Efficiency: N/A  
Efficacy: 117.2 lumens/watt  
Luminous Opening: Rectangular (W 2' x L: 1' x H: 0')  
IES Classification: Type III - Short  
BUG Rating: B5 - U0 - G5

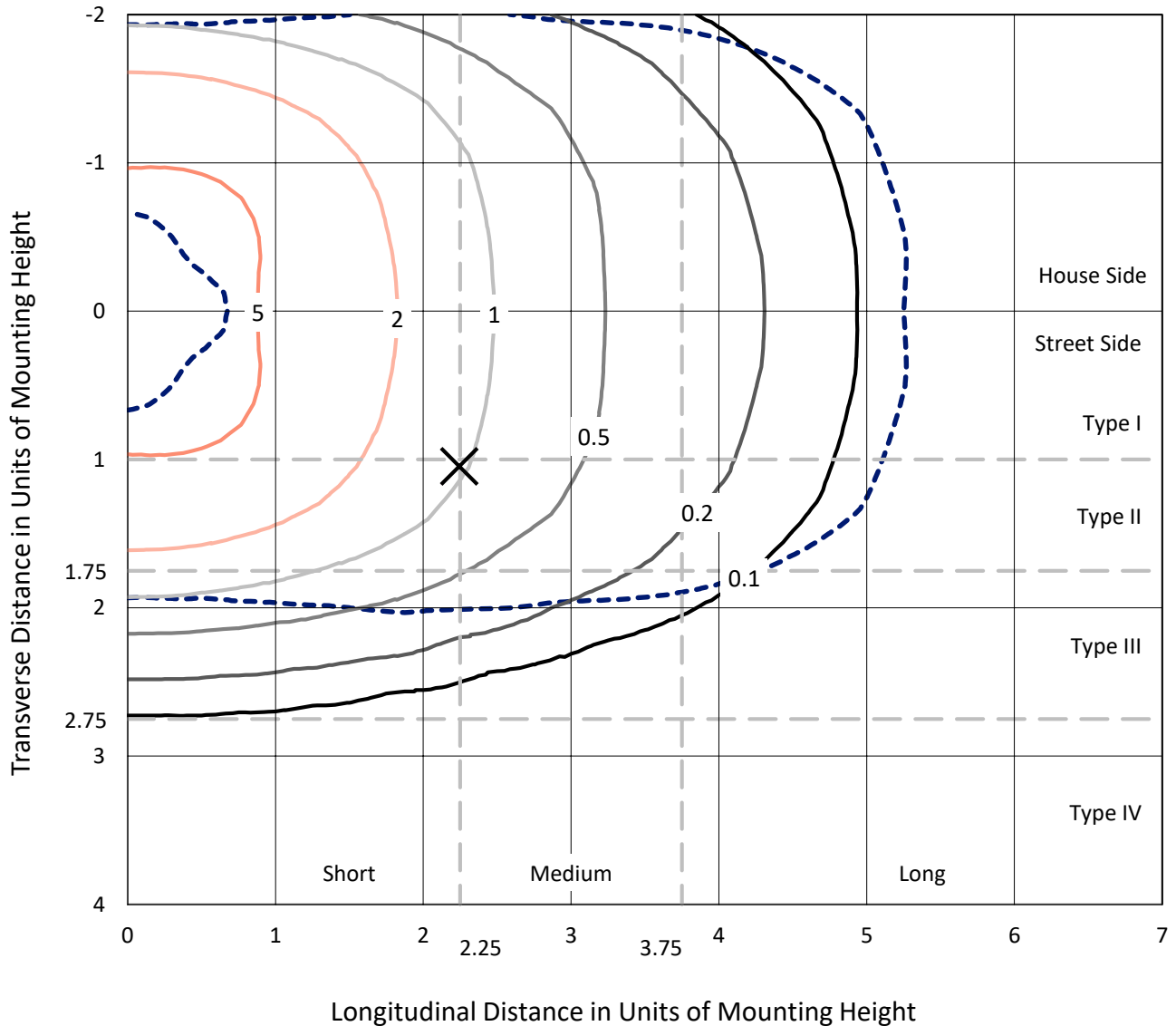
Input Watts (W): 334  
Input Voltage (V): NR  
Input Current (Ain): NR  
Voltage Rise (V): NR  
Power Factor: NR  
Total Harmonic Distortion (THDi): NR  
Frequency (hertz): 60  
Stabilization Time: NR  
Operation Time: NR  
Ambient Temperature (°C): NR  
Test Distance: 24 FT



REPORT NUMBER: P317042  
 CATALOG NUMBER: GLEON-SA8B-727-U-RW

### Iso-Footcandle Lines of Horizontal Illumination

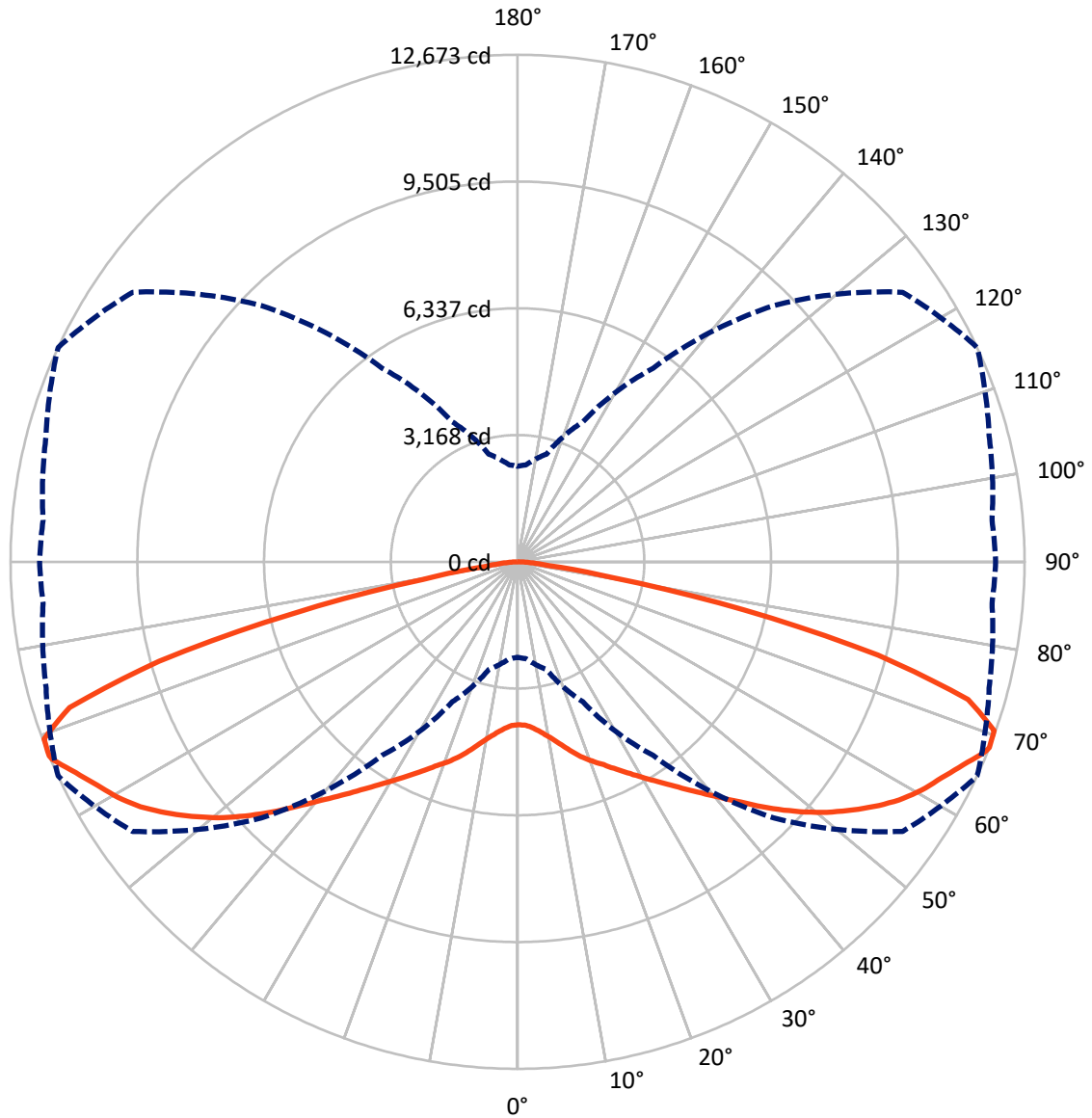
✕ Max cd  
 - - - 1/2 Max cd



Based on 25 foot mounting height. Maximum calculated value = 7.4 fc  
 Type III - Short - N/A

REPORT NUMBER: P317042  
CATALOG NUMBER: GLEON-SA8B-727-U-RW

### Luminous Intensity Polar Plot



— Vertical Plane Through 65-Deg Lateral      - - - Horizontal Cone Through 68-Deg Vertical

REPORT NUMBER: P317042  
 CATALOG NUMBER: GLEON-SA8B-727-U-RW

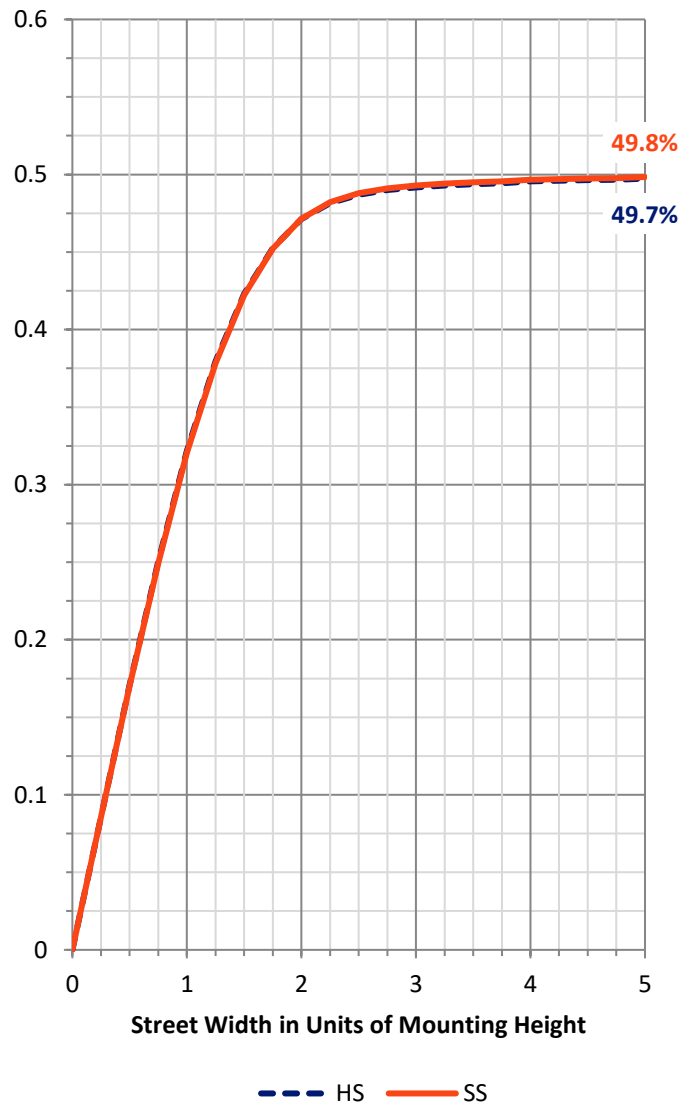
**FLUX DISTRIBUTION:**

|                    |           | Downward | Upward | Total   |
|--------------------|-----------|----------|--------|---------|
| <b>House Side</b>  | Lumens    | 19576.0  | 0.0    | 19576.0 |
|                    | % Fixture | 50.0     | 0.0    | 50.0    |
| <b>Street Side</b> | Lumens    | 19576.0  | 0.0    | 19576.0 |
|                    | % Fixture | 50.0     | 0.0    | 50.0    |
| <b>Total</b>       | Lumens    | 39152.0  | 0.0    | 39152.0 |
|                    | % Fixture | 100.0    | 0.0    | 100.0   |

**ZONAL LUMENS:**

| Zone      | Lumens  | % Fixture |
|-----------|---------|-----------|
| 0°-10°    | 398.6   | 1.0       |
| 10°-20°   | 1334.6  | 3.4       |
| 20°-30°   | 2602.1  | 6.6       |
| 30°-40°   | 4371.3  | 11.2      |
| 40°-50°   | 6887.6  | 17.6      |
| 50°-60°   | 9211.0  | 23.5      |
| 60°-70°   | 8954.2  | 22.9      |
| 70°-80°   | 4894.8  | 12.5      |
| 80°-90°   | 497.8   | 1.3       |
| 90°-100°  | 0.0     | 0.0       |
| 100°-110° | 0.0     | 0.0       |
| 110°-120° | 0.0     | 0.0       |
| 120°-130° | 0.0     | 0.0       |
| 130°-140° | 0.0     | 0.0       |
| 140°-150° | 0.0     | 0.0       |
| 150°-160° | 0.0     | 0.0       |
| 160°-170° | 0.0     | 0.0       |
| 170°-180° | 0.0     | 0.0       |
| 0°-90°    | 39152.0 | 100.0     |
| 0°-180°   | 39152.0 | 100.0     |

**Coefficient of Utilization**

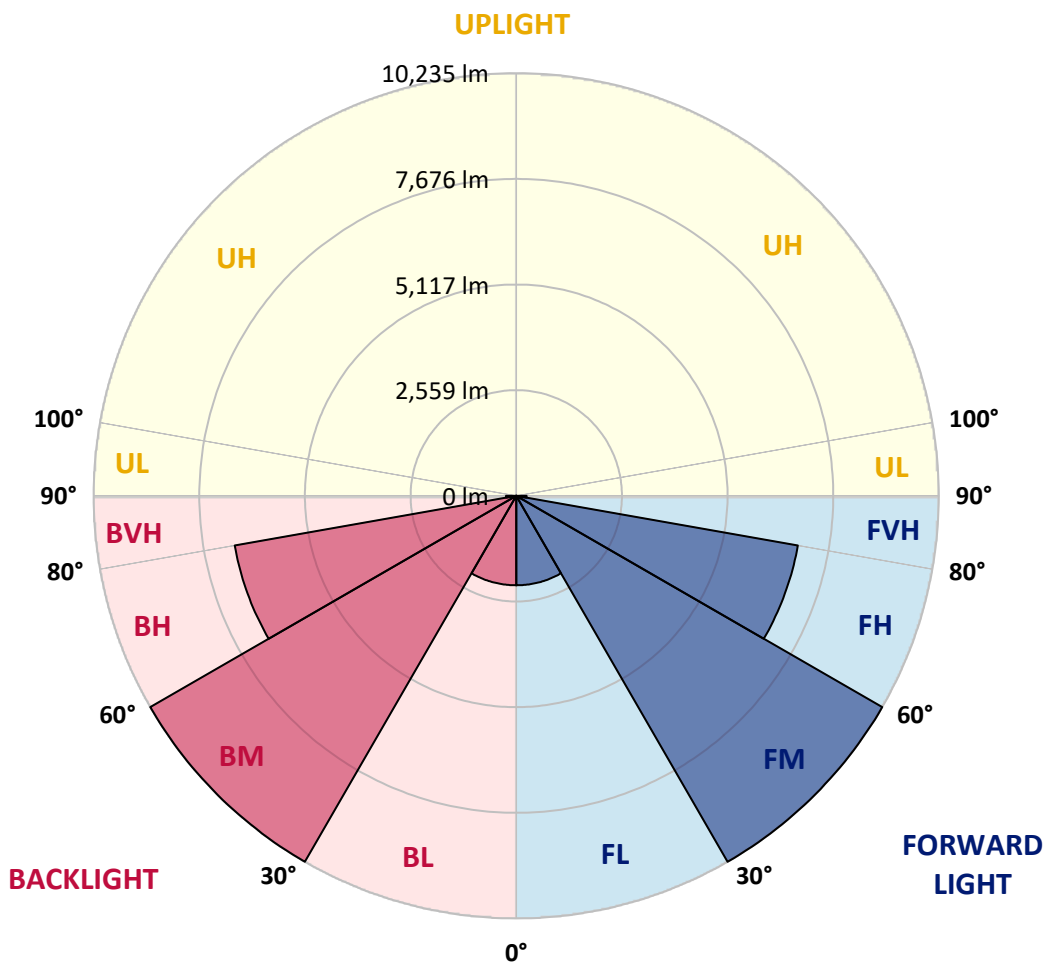


REPORT NUMBER: P317042  
 CATALOG NUMBER: GLEON-SA8B-727-U-RW

**LUMINAIRE CLASSIFICATION SYSTEM LUMEN TABLE AND BUG RATING:**

| Zone           | Lumens  | % Fixture | Zone Rating/Lumen Limit |      |         |
|----------------|---------|-----------|-------------------------|------|---------|
|                |         |           | B                       | U    | G       |
| FL (0°-30°)    | 2167.6  | 5.5       |                         |      |         |
| FM (30°-60°)   | 10234.9 | 26.1      |                         |      |         |
| FH (60°-80°)   | 6924.5  | 17.7      |                         |      | G3/7500 |
| FVH (80°-90°)  | 248.9   | 0.6       |                         |      | G3/500  |
| BL (0°-30°)    | 2167.6  | 5.5       | B3/2500                 |      |         |
| BM (30°-60°)   | 10234.9 | 26.1      | B5                      |      |         |
| BH (60°-80°)   | 6924.5  | 17.7      | B5                      |      | G5      |
| BVH (80°-90°)  | 248.9   | 0.6       |                         |      | G3/500  |
| UL (90°-100°)  | 0.0     | 0.0       |                         | U0/0 |         |
| UH (100°-180°) | 0.0     | 0.0       |                         | U0/0 |         |

**BUG Rating: B5-U0-G5**  
 Type III Short





REPORT NUMBER: P317042

CATALOG NUMBER: GLEON-SA8B-727-U-RW

**CANDELA DISTRIBUTION (FULL):**

|       | 0°     | 5°     | 15°    | 25°     | 35°     | 45°     | 55°     | 65°     | 75°     | 85°     | 90°     |
|-------|--------|--------|--------|---------|---------|---------|---------|---------|---------|---------|---------|
| 0°    | 4070.9 | 4070.9 | 4070.9 | 4070.9  | 4070.9  | 4070.9  | 4070.9  | 4070.9  | 4070.9  | 4070.9  | 4070.9  |
| 2.5°  | 4042.0 | 4043.3 | 4049.9 | 4057.8  | 4064.3  | 4081.4  | 4085.3  | 4091.9  | 4094.5  | 4101.1  | 4101.1  |
| 5°    | 4006.6 | 4009.2 | 4024.9 | 4045.9  | 4069.6  | 4111.6  | 4141.8  | 4175.9  | 4193.0  | 4211.4  | 4210.0  |
| 7.5°  | 4002.6 | 4009.2 | 4031.5 | 4065.6  | 4105.0  | 4174.6  | 4237.6  | 4305.9  | 4351.8  | 4393.8  | 4391.2  |
| 10°   | 4043.3 | 4053.8 | 4085.3 | 4136.5  | 4195.6  | 4282.2  | 4375.4  | 4467.3  | 4547.4  | 4611.7  | 4614.4  |
| 12.5° | 4105.0 | 4118.1 | 4168.0 | 4245.5  | 4334.8  | 4446.3  | 4556.6  | 4660.3  | 4770.6  | 4866.4  | 4874.3  |
| 15°   | 4186.4 | 4203.5 | 4278.3 | 4393.8  | 4530.4  | 4662.9  | 4781.1  | 4887.4  | 5014.8  | 5147.4  | 5160.5  |
| 17.5° | 4307.2 | 4330.8 | 4429.3 | 4585.5  | 4765.3  | 4911.1  | 5034.5  | 5114.5  | 5220.9  | 5357.4  | 5382.3  |
| 20°   | 4491.0 | 4521.2 | 4645.9 | 4832.3  | 5051.5  | 5203.8  | 5298.3  | 5315.4  | 5367.9  | 5490.0  | 5518.9  |
| 22.5° | 4729.9 | 4756.2 | 4895.3 | 5117.2  | 5362.6  | 5528.1  | 5577.9  | 5509.7  | 5504.4  | 5602.9  | 5630.5  |
| 25°   | 4996.4 | 5020.0 | 5181.5 | 5430.9  | 5694.8  | 5877.3  | 5875.9  | 5743.4  | 5651.5  | 5727.6  | 5756.5  |
| 27.5° | 5295.7 | 5332.5 | 5487.4 | 5749.9  | 6032.2  | 6212.0  | 6201.5  | 5996.7  | 5822.1  | 5841.8  | 5866.8  |
| 30°   | 5639.6 | 5680.3 | 5831.3 | 6097.8  | 6380.0  | 6556.0  | 6542.8  | 6272.4  | 6009.8  | 5957.3  | 5975.7  |
| 32.5° | 6066.3 | 6114.9 | 6258.0 | 6520.5  | 6769.9  | 6928.8  | 6890.7  | 6571.7  | 6235.6  | 6121.4  | 6138.5  |
| 35°   | 6579.6 | 6608.5 | 6759.4 | 7018.0  | 7220.2  | 7329.2  | 7249.1  | 6918.3  | 6521.8  | 6384.0  | 6384.0  |
| 37.5° | 7099.4 | 7121.8 | 7291.1 | 7541.8  | 7737.4  | 7795.2  | 7639.0  | 7297.7  | 6896.0  | 6700.4  | 6704.3  |
| 40°   | 7598.3 | 7658.7 | 7849.0 | 8106.3  | 8299.3  | 8315.1  | 8107.6  | 7730.9  | 7312.1  | 7109.9  | 7133.6  |
| 42.5° | 8119.5 | 8178.5 | 8405.6 | 8697.1  | 8867.7  | 8894.0  | 8651.1  | 8216.6  | 7782.1  | 7618.0  | 7644.2  |
| 45°   | 8584.2 | 8631.4 | 8894.0 | 9232.7  | 9445.3  | 9513.6  | 9226.1  | 8773.2  | 8290.1  | 8130.0  | 8136.5  |
| 47.5° | 8908.4 | 8970.1 | 9258.9 | 9658.0  | 9967.8  | 10072.9 | 9790.6  | 9315.4  | 8790.3  | 8596.0  | 8613.1  |
| 50°   | 9202.5 | 9235.3 | 9528.1 | 9963.9  | 10357.7 | 10574.3 | 10332.8 | 9851.0  | 9295.7  | 9089.6  | 9108.0  |
| 52.5° | 9366.6 | 9408.6 | 9692.1 | 10146.4 | 10612.4 | 10961.6 | 10814.6 | 10332.8 | 9784.0  | 9583.2  | 9605.5  |
| 55°   | 9252.4 | 9283.9 | 9623.9 | 10187.1 | 10769.9 | 11200.5 | 11222.8 | 10804.1 | 10263.2 | 10087.3 | 10150.3 |
| 57.5° | 8732.5 | 8771.9 | 9186.7 | 9924.5  | 10789.6 | 11362.0 | 11530.0 | 11241.2 | 10710.9 | 10567.8 | 10604.5 |
| 60°   | 7919.9 | 7944.9 | 8387.3 | 9216.9  | 10406.3 | 11428.9 | 11725.6 | 11598.3 | 11149.3 | 11006.2 | 11056.1 |
| 62.5° | 6471.9 | 6508.7 | 7037.7 | 8149.7  | 9596.3  | 11230.7 | 11914.7 | 11893.7 | 11557.6 | 11426.3 | 11470.9 |
| 65°   | 4424.0 | 4488.3 | 5073.8 | 6479.8  | 8347.9  | 10624.2 | 12086.6 | 12237.6 | 11918.6 | 11753.2 | 11812.3 |
| 67.5° | 2671.5 | 2718.7 | 3142.8 | 4278.3  | 6387.9  | 9400.7  | 11909.4 | 12628.8 | 12173.3 | 11906.8 | 11955.4 |
| 68°   | 2387.9 | 2431.2 | 2785.7 | 3860.8  | 5908.8  | 9055.5  | 11747.9 | 12673.4 | 12200.8 | 11904.2 | 11947.5 |
| 70°   | 1442.7 | 1471.6 | 1709.2 | 2386.6  | 3939.6  | 7183.5  | 10646.5 | 12636.7 | 12376.8 | 11940.9 | 11965.9 |
| 72.5° | 939.9  | 949.1  | 988.5  | 1224.8  | 2012.5  | 4017.1  | 7990.8  | 11775.5 | 12640.6 | 12154.9 | 12151.0 |
| 75°   | 781.1  | 775.8  | 779.8  | 807.4   | 992.5   | 1761.7  | 4669.5  | 9302.3  | 12049.9 | 11817.5 | 11734.8 |
| 77.5° | 660.3  | 656.4  | 655.1  | 656.4   | 664.3   | 850.7   | 2026.9  | 5794.5  | 9220.9  | 10453.6 | 10527.1 |
| 80°   | 534.3  | 529.0  | 546.1  | 538.2   | 514.6   | 529.0   | 849.4   | 2410.2  | 4346.6  | 4676.1  | 4382.0  |
| 82.5° | 388.6  | 368.9  | 442.4  | 421.4   | 401.7   | 372.8   | 468.7   | 778.5   | 1037.1  | 711.5   | 500.2   |
| 85°   | 299.3  | 278.3  | 336.1  | 322.9   | 275.7   | 190.4   | 278.3   | 380.7   | 420.1   | 240.2   | 189.0   |
| 87.5° | 122.1  | 128.7  | 242.9  | 191.7   | 161.5   | 91.9    | 114.2   | 152.3   | 204.8   | 102.4   | 78.8    |
| 90°   | 0.0    | 0.0    | 0.0    | 0.0     | 0.0     | 0.0     | 0.0     | 0.0     | 0.0     | 0.0     | 0.0     |

Signify Classified - Internal  
Cooper Lighting Solutions Photometric Lab  
1121 Highway 74 South  
Peachtree City, GA 30269



LM-79-2008: Approved Method: Electrical and Photometric Measurements of Solid-  
State Lighting Products

Report Prepared for

Cooper Lighting Solutions

McGRAW-EDISON

Report Number: SP1-1908-441-1-R4

Test Date: 08/20/2019

Luminaire Tested: SA1C-727-U-5WQ



**Test Information**

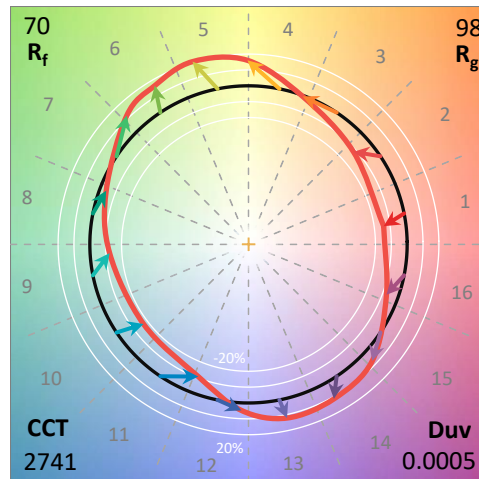
Test Method: LM-79-2008  
 Report Number: SP1-1908-441-1-R4  
 Test Lab: COOPER LIGHTING SOLUTIONS  
 Photometer: SP1 - 76IN SPHERE  
 Measurement Geometry: 4π  
 Issue Date: 10/28/2024  
 Manufacturer: COOPER LIGHTING SOLUTIONS  
 Product Line: MCGRAW-EDISON  
 Catalog Number: **SA1C-727-U-5WQ**  
 Description: MCGRAW EDISON ROADWAY AND AREA LUMINAIRE

\*\*\*THIS IS A REVISION OF SP1-1908-441-1-R3. TO UPDATE THE CATALOG NUMBER.\*\*\*TESTED IN  
 SITU. (1) 70 CRI, 2700K, 1050MA LIGHTSQUARE WITH 16 LEDS AND TYPE V WIDE OPTICS.

**Spectral Parameters**

CCT (K): 2741  
 CIE u': 0.2605  
 CIE v': 0.5272  
 Duv: 0.0005  
 CIE x: 0.4573  
 CIE y: 0.4113  
 CIE z: 0.1313  
 Peak Wavelength (nm): 602  
 Dominant Wavelength (nm): 583  
 Purity: 61.2  
 Rf: 69.9  
 Rg: 98.3

|           |      |      |       |
|-----------|------|------|-------|
| CRI (Ra): | 71.5 |      |       |
| R1:       | 69.2 | R9:  | -16.1 |
| R2:       | 79.4 | R10: | 51.4  |
| R3:       | 87.8 | R11: | 63.1  |
| R4:       | 69.4 | R12: | 42.0  |
| R5:       | 66.4 | R13: | 70.2  |
| R6:       | 69.8 | R14: | 92.4  |
| R7:       | 79.8 |      |       |
| R8:       | 50.1 |      |       |



**Test Conditions**

Stabilization Time: 56M  
 Operation Time: 12H  
 Room Temperature (°C) / RH%: 25.3./42%  
 Sphere Temperature (°C): 25.7

REPORT NUMBER: SP1-1908-441-1-R4

| Measurement and Test Equipment |                       |                  |                      |
|--------------------------------|-----------------------|------------------|----------------------|
| Instrument                     | Identification Number | Calibration Date | Calibration Due Date |
| Photometer                     | IN0058                | 6/28/2019        | 12/28/2019           |
| Power Meter                    | IN0071                | 12/5/2018        | 12/5/2019            |
| AC Power Source                | IN0063                | 12/5/2018        | 12/5/2019            |
| DC Power Source                | IN0208                | 12/5/2018        | 12/5/2019            |
| Sphere Thermometer             | IN0085                | 12/5/2018        | 12/5/2019            |
| Room Thermometer               | IN0046                | 12/5/2018        | 12/5/2019            |

REPORT NUMBER: SP1-1908-441-1-R4

CIE 1931 Chromaticity Diagram



CIE 1931 Chromaticity Diagram with 2017 ANSI 7-Step and 4-Step Quadrangles



Point lies inside the ANSI 2700K 4-step quadrangle

REPORT NUMBER: SP1-1908-441-1-R4

**Photopic Flux vs. Wavelength**



**Photopic Lumens: 6211.7**

| $\lambda$ (nm) | Power ( $\mu\text{W}/\text{nm}$ ) | Lumens ( $\phi/\text{nm}$ ) | $\lambda$ (nm) | Power ( $\mu\text{W}/\text{nm}$ ) | Lumens ( $\phi/\text{nm}$ ) | $\lambda$ (nm) | Power ( $\mu\text{W}/\text{nm}$ ) | Lumens ( $\phi/\text{nm}$ ) | $\lambda$ (nm) | Power ( $\mu\text{W}/\text{nm}$ ) | Lumens ( $\phi/\text{nm}$ ) | $\lambda$ (nm) | Power ( $\mu\text{W}/\text{nm}$ ) | Lumens ( $\phi/\text{nm}$ ) |
|----------------|-----------------------------------|-----------------------------|----------------|-----------------------------------|-----------------------------|----------------|-----------------------------------|-----------------------------|----------------|-----------------------------------|-----------------------------|----------------|-----------------------------------|-----------------------------|
| 360            | 2044                              | 0.0                         | 490            | 7179                              | 1.0                         | 620            | 118034                            | 30.7                        | 750            | 8362                              | 0.0                         | 880            | 3128                              | 0.0                         |
| 365            | 2016                              | 0.0                         | 495            | 10476                             | 1.9                         | 625            | 111884                            | 24.7                        | 755            | 7635                              | 0.0                         | 885            | 3110                              | 0.0                         |
| 370            | 2020                              | 0.0                         | 500            | 15549                             | 3.4                         | 630            | 106119                            | 19.2                        | 760            | 6582                              | 0.0                         | 890            | 2632                              | 0.0                         |
| 375            | 2137                              | 0.0                         | 505            | 22477                             | 6.3                         | 635            | 99706                             | 15.0                        | 765            | 5777                              | 0.0                         | 895            | 2709                              | 0.0                         |
| 380            | 2046                              | 0.0                         | 510            | 30417                             | 10.4                        | 640            | 92142                             | 11.0                        | 770            | 5474                              | 0.0                         | 900            | 2016                              | 0.0                         |
| 385            | 1925                              | 0.0                         | 515            | 39274                             | 16.3                        | 645            | 84987                             | 8.2                         | 775            | 4977                              | 0.0                         | 905            | 1748                              | 0.0                         |
| 390            | 1893                              | 0.0                         | 520            | 47282                             | 22.9                        | 650            | 78016                             | 5.7                         | 780            | 4723                              | 0.0                         | 910            | 2046                              | 0.0                         |
| 395            | 1695                              | 0.0                         | 525            | 55413                             | 29.7                        | 655            | 71541                             | 4.1                         | 785            | 4219                              | 0.0                         | 915            | 1844                              | 0.0                         |
| 400            | 1633                              | 0.0                         | 530            | 62377                             | 36.7                        | 660            | 64863                             | 2.7                         | 790            | 3969                              | 0.0                         | 920            | 2734                              | 0.0                         |
| 405            | 2065                              | 0.0                         | 535            | 68520                             | 42.5                        | 665            | 58485                             | 1.9                         | 795            | 4122                              | 0.0                         | 925            | 2307                              | 0.0                         |
| 410            | 3449                              | 0.0                         | 540            | 73435                             | 47.8                        | 670            | 51641                             | 1.1                         | 800            | 2864                              | 0.0                         | 930            | 2039                              | 0.0                         |
| 415            | 7117                              | 0.0                         | 545            | 78677                             | 52.4                        | 675            | 46030                             | 0.8                         | 805            | 3151                              | 0.0                         | 935            | 1784                              | 0.0                         |
| 420            | 13992                             | 0.0                         | 550            | 83331                             | 56.6                        | 680            | 40590                             | 0.5                         | 810            | 3022                              | 0.0                         | 940            | 2464                              | 0.0                         |
| 425            | 25176                             | 0.1                         | 555            | 89120                             | 60.9                        | 685            | 35691                             | 0.3                         | 815            | 3471                              | 0.0                         | 945            | 2794                              | 0.0                         |
| 430            | 38151                             | 0.3                         | 560            | 94613                             | 64.3                        | 690            | 31631                             | 0.2                         | 820            | 2749                              | 0.0                         | 950            | 3090                              | 0.0                         |
| 435            | 49673                             | 0.6                         | 565            | 99818                             | 66.4                        | 695            | 27437                             | 0.1                         | 825            | 2729                              | 0.0                         | 955            | 1866                              | 0.0                         |
| 440            | 57273                             | 0.9                         | 570            | 106526                            | 69.3                        | 700            | 24589                             | 0.1                         | 830            | 2282                              | 0.0                         | 960            | 3110                              | 0.0                         |
| 445            | 54802                             | 1.1                         | 575            | 111610                            | 69.4                        | 705            | 21832                             | 0.0                         | 835            | 3140                              | 0.0                         | 965            | 3880                              | 0.0                         |
| 450            | 39184                             | 1.0                         | 580            | 117163                            | 69.6                        | 710            | 19500                             | 0.0                         | 840            | 2365                              | 0.0                         | 970            | 3243                              | 0.0                         |
| 455            | 22506                             | 0.8                         | 585            | 122201                            | 67.9                        | 715            | 17870                             | 0.0                         | 845            | 3024                              | 0.0                         | 975            | 2014                              | 0.0                         |
| 460            | 13692                             | 0.6                         | 590            | 125662                            | 65.0                        | 720            | 15924                             | 0.0                         | 850            | 2510                              | 0.0                         | 980            | 1688                              | 0.0                         |
| 465            | 9446                              | 0.5                         | 595            | 127415                            | 60.4                        | 725            | 14268                             | 0.0                         | 855            | 2739                              | 0.0                         | 985            | 2827                              | 0.0                         |
| 470            | 6698                              | 0.4                         | 600            | 129155                            | 55.7                        | 730            | 12438                             | 0.0                         | 860            | 3515                              | 0.0                         | 990            | 4172                              | 0.0                         |
| 475            | 5328                              | 0.4                         | 605            | 128057                            | 49.6                        | 735            | 11255                             | 0.0                         | 865            | 3600                              | 0.0                         | 995            | 3177                              | 0.0                         |
| 480            | 5081                              | 0.5                         | 610            | 126031                            | 43.3                        | 740            | 9951                              | 0.0                         | 870            | 3609                              | 0.0                         | 1000           | 3241                              | 0.0                         |
| 485            | 5579                              | 0.7                         | 615            | 123059                            | 37.1                        | 745            | 8870                              | 0.0                         | 875            | 3208                              | 0.0                         |                |                                   |                             |

REPORT NUMBER: SP1-1908-441-1-R4

Scotopic Flux vs. Wavelength



Scotopic Lumens: 6474.3

S/P: 1.04

| λ (nm) | Power (µW/nm) | Lumens (φ/nm) | λ (nm) | Power (µW/nm) | Lumens (φ/nm) | λ (nm) | Power (µW/nm) | Lumens (φ/nm) | λ (nm) | Power (µW/nm) | Lumens (φ/nm) | λ (nm) | Power (µW/nm) | Lumens (φ/nm) |
|--------|---------------|---------------|--------|---------------|---------------|--------|---------------|---------------|--------|---------------|---------------|--------|---------------|---------------|
| 360    | 2044          | 0.0           | 490    | 7179          | 6.0           | 620    | 118034        | 0.1           | 750    | 8362          | 0.0           | 880    | 3128          | 0.0           |
| 365    | 2016          | 0.0           | 495    | 10476         | 8.6           | 625    | 111884        | 0.1           | 755    | 7635          | 0.0           | 885    | 3110          | 0.0           |
| 370    | 2020          | 0.0           | 500    | 15549         | 12.5          | 630    | 106119        | 0.0           | 760    | 6582          | 0.0           | 890    | 2632          | 0.0           |
| 375    | 2137          | 0.0           | 505    | 22477         | 17.3          | 635    | 99706         | 0.0           | 765    | 5777          | 0.0           | 895    | 2709          | 0.0           |
| 380    | 2046          | 0.0           | 510    | 30417         | 21.8          | 640    | 92142         | 0.0           | 770    | 5474          | 0.0           | 900    | 2016          | 0.0           |
| 385    | 1925          | 0.0           | 515    | 39274         | 25.7          | 645    | 84987         | 0.0           | 775    | 4977          | 0.0           | 905    | 1748          | 0.0           |
| 390    | 1893          | 0.0           | 520    | 47282         | 27.5          | 650    | 78016         | 0.0           | 780    | 4723          | 0.0           | 910    | 2046          | 0.0           |
| 395    | 1695          | 0.0           | 525    | 55413         | 28.1          | 655    | 71541         | 0.0           | 785    | 4219          | 0.0           | 915    | 1844          | 0.0           |
| 400    | 1633          | 0.0           | 530    | 62377         | 27.0          | 660    | 64863         | 0.0           | 790    | 3969          | 0.0           | 920    | 2734          | 0.0           |
| 405    | 2065          | 0.0           | 535    | 68520         | 24.7          | 665    | 58485         | 0.0           | 795    | 4122          | 0.0           | 925    | 2307          | 0.0           |
| 410    | 3449          | 0.1           | 540    | 73435         | 21.5          | 670    | 51641         | 0.0           | 800    | 2864          | 0.0           | 930    | 2039          | 0.0           |
| 415    | 7117          | 0.5           | 545    | 78677         | 18.3          | 675    | 46030         | 0.0           | 805    | 3151          | 0.0           | 935    | 1784          | 0.0           |
| 420    | 13992         | 1.6           | 550    | 83331         | 15.0          | 680    | 40590         | 0.0           | 810    | 3022          | 0.0           | 940    | 2464          | 0.0           |
| 425    | 25176         | 3.9           | 555    | 89120         | 12.0          | 685    | 35691         | 0.0           | 815    | 3471          | 0.0           | 945    | 2794          | 0.0           |
| 430    | 38151         | 8.1           | 560    | 94613         | 9.3           | 690    | 31631         | 0.0           | 820    | 2749          | 0.0           | 950    | 3090          | 0.0           |
| 435    | 49673         | 13.3          | 565    | 99818         | 7.0           | 695    | 27437         | 0.0           | 825    | 2729          | 0.0           | 955    | 1866          | 0.0           |
| 440    | 57273         | 19.1          | 570    | 106526        | 5.2           | 700    | 24589         | 0.0           | 830    | 2282          | 0.0           | 960    | 3110          | 0.0           |
| 445    | 54802         | 21.6          | 575    | 111610        | 3.7           | 705    | 21832         | 0.0           | 835    | 3140          | 0.0           | 965    | 3880          | 0.0           |
| 450    | 39184         | 18.1          | 580    | 117163        | 2.6           | 710    | 19500         | 0.0           | 840    | 2365          | 0.0           | 970    | 3243          | 0.0           |
| 455    | 22506         | 11.8          | 585    | 122201        | 1.8           | 715    | 17870         | 0.0           | 845    | 3024          | 0.0           | 975    | 2014          | 0.0           |
| 460    | 13692         | 8.1           | 590    | 125662        | 1.2           | 720    | 15924         | 0.0           | 850    | 2510          | 0.0           | 980    | 1688          | 0.0           |
| 465    | 9446          | 6.2           | 595    | 127415        | 0.8           | 725    | 14268         | 0.0           | 855    | 2739          | 0.0           | 985    | 2827          | 0.0           |
| 470    | 6698          | 4.8           | 600    | 129155        | 0.5           | 730    | 12438         | 0.0           | 860    | 3515          | 0.0           | 990    | 4172          | 0.0           |
| 475    | 5328          | 4.1           | 605    | 128057        | 0.4           | 735    | 11255         | 0.0           | 865    | 3600          | 0.0           | 995    | 3177          | 0.0           |
| 480    | 5081          | 4.1           | 610    | 126031        | 0.2           | 740    | 9951          | 0.0           | 870    | 3609          | 0.0           | 1000   | 3241          | 0.0           |
| 485    | 5579          | 4.6           | 615    | 123059        | 0.1           | 745    | 8870          | 0.0           | 875    | 3208          | 0.0           |        |               |               |

REPORT NUMBER: SP1-1908-441-1-R4

**Melanopic Flux vs. Wavelength**



**Melanopic Lumens: 2145.7 M/P: 0.35**

| $\lambda$ (nm) | Power ( $\mu\text{W}/\text{nm}$ ) | Lumens ( $\phi/\text{nm}$ ) | $\lambda$ (nm) | Power ( $\mu\text{W}/\text{nm}$ ) | Lumens ( $\phi/\text{nm}$ ) | $\lambda$ (nm) | Power ( $\mu\text{W}/\text{nm}$ ) | Lumens ( $\phi/\text{nm}$ ) | $\lambda$ (nm) | Power ( $\mu\text{W}/\text{nm}$ ) | Lumens ( $\phi/\text{nm}$ ) | $\lambda$ (nm) | Power ( $\mu\text{W}/\text{nm}$ ) | Lumens ( $\phi/\text{nm}$ ) |
|----------------|-----------------------------------|-----------------------------|----------------|-----------------------------------|-----------------------------|----------------|-----------------------------------|-----------------------------|----------------|-----------------------------------|-----------------------------|----------------|-----------------------------------|-----------------------------|
| 360            | 2044                              | 0.0                         | 490            | 7179                              | 11.1                        | 620            | 118034                            | 1.5                         | 750            | 8362                              | 0.0                         | 880            | 3128                              | 0.0                         |
| 365            | 2016                              | 0.0                         | 495            | 10476                             | 16.9                        | 625            | 111884                            | 0.9                         | 755            | 7635                              | 0.0                         | 885            | 3110                              | 0.0                         |
| 370            | 2020                              | 0.0                         | 500            | 15549                             | 26.0                        | 630            | 106119                            | 0.6                         | 760            | 6582                              | 0.0                         | 890            | 2632                              | 0.0                         |
| 375            | 2137                              | 0.0                         | 505            | 22477                             | 38.2                        | 635            | 99706                             | 0.4                         | 765            | 5777                              | 0.0                         | 895            | 2709                              | 0.0                         |
| 380            | 2046                              | 0.0                         | 510            | 30417                             | 51.6                        | 640            | 92142                             | 0.2                         | 770            | 5474                              | 0.0                         | 900            | 2016                              | 0.0                         |
| 385            | 1925                              | 0.0                         | 515            | 39274                             | 65.1                        | 645            | 84987                             | 0.1                         | 775            | 4977                              | 0.0                         | 905            | 1748                              | 0.0                         |
| 390            | 1893                              | 0.0                         | 520            | 47282                             | 75.2                        | 650            | 78016                             | 0.1                         | 780            | 4723                              | 0.0                         | 910            | 2046                              | 0.0                         |
| 395            | 1695                              | 0.0                         | 525            | 55413                             | 82.9                        | 655            | 71541                             | 0.1                         | 785            | 4219                              | 0.0                         | 915            | 1844                              | 0.0                         |
| 400            | 1633                              | 0.0                         | 530            | 62377                             | 86.0                        | 660            | 64863                             | 0.0                         | 790            | 3969                              | 0.0                         | 920            | 2734                              | 0.0                         |
| 405            | 2065                              | 0.1                         | 535            | 68520                             | 85.4                        | 665            | 58485                             | 0.0                         | 795            | 4122                              | 0.0                         | 925            | 2307                              | 0.0                         |
| 410            | 3449                              | 0.2                         | 540            | 73435                             | 81.1                        | 670            | 51641                             | 0.0                         | 800            | 2864                              | 0.0                         | 930            | 2039                              | 0.0                         |
| 415            | 7117                              | 0.7                         | 545            | 78677                             | 75.4                        | 675            | 46030                             | 0.0                         | 805            | 3151                              | 0.0                         | 935            | 1784                              | 0.0                         |
| 420            | 13992                             | 2.3                         | 550            | 83331                             | 68.1                        | 680            | 40590                             | 0.0                         | 810            | 3022                              | 0.0                         | 940            | 2464                              | 0.0                         |
| 425            | 25176                             | 6.2                         | 555            | 89120                             | 60.9                        | 685            | 35691                             | 0.0                         | 815            | 3471                              | 0.0                         | 945            | 2794                              | 0.0                         |
| 430            | 38151                             | 13.0                        | 560            | 94613                             | 52.9                        | 690            | 31631                             | 0.0                         | 820            | 2749                              | 0.0                         | 950            | 3090                              | 0.0                         |
| 435            | 49673                             | 22.2                        | 565            | 99818                             | 44.8                        | 695            | 27437                             | 0.0                         | 825            | 2729                              | 0.0                         | 955            | 1866                              | 0.0                         |
| 440            | 57273                             | 32.0                        | 570            | 106526                            | 37.6                        | 700            | 24589                             | 0.0                         | 830            | 2282                              | 0.0                         | 960            | 3110                              | 0.0                         |
| 445            | 54802                             | 36.7                        | 575            | 111610                            | 30.4                        | 705            | 21832                             | 0.0                         | 835            | 3140                              | 0.0                         | 965            | 3880                              | 0.0                         |
| 450            | 39184                             | 30.4                        | 580            | 117163                            | 24.1                        | 710            | 19500                             | 0.0                         | 840            | 2365                              | 0.0                         | 970            | 3243                              | 0.0                         |
| 455            | 22506                             | 19.7                        | 585            | 122201                            | 18.7                        | 715            | 17870                             | 0.0                         | 845            | 3024                              | 0.0                         | 975            | 2014                              | 0.0                         |
| 460            | 13692                             | 13.2                        | 590            | 125662                            | 14.0                        | 720            | 15924                             | 0.0                         | 850            | 2510                              | 0.0                         | 980            | 1688                              | 0.0                         |
| 465            | 9446                              | 10.0                        | 595            | 127415                            | 10.2                        | 725            | 14268                             | 0.0                         | 855            | 2739                              | 0.0                         | 985            | 2827                              | 0.0                         |
| 470            | 6698                              | 7.7                         | 600            | 129155                            | 7.3                         | 730            | 12438                             | 0.0                         | 860            | 3515                              | 0.0                         | 990            | 4172                              | 0.0                         |
| 475            | 5328                              | 6.7                         | 605            | 128057                            | 5.0                         | 735            | 11255                             | 0.0                         | 865            | 3600                              | 0.0                         | 995            | 3177                              | 0.0                         |
| 480            | 5081                              | 6.9                         | 610            | 126031                            | 3.4                         | 740            | 9951                              | 0.0                         | 870            | 3609                              | 0.0                         | 1000           | 3241                              | 0.0                         |
| 485            | 5579                              | 8.1                         | 615            | 123059                            | 2.3                         | 745            | 8870                              | 0.0                         | 875            | 3208                              | 0.0                         |                |                                   |                             |

REPORT NUMBER: SP1-1908-441-1-R4

TM-30-18

**Summary**

$R_f = 69.9$   
 $R_g = 98.3$   
 $CIE R_a = 71.5$   
 $R_g = -16.1$



**Color Vector Graphics**

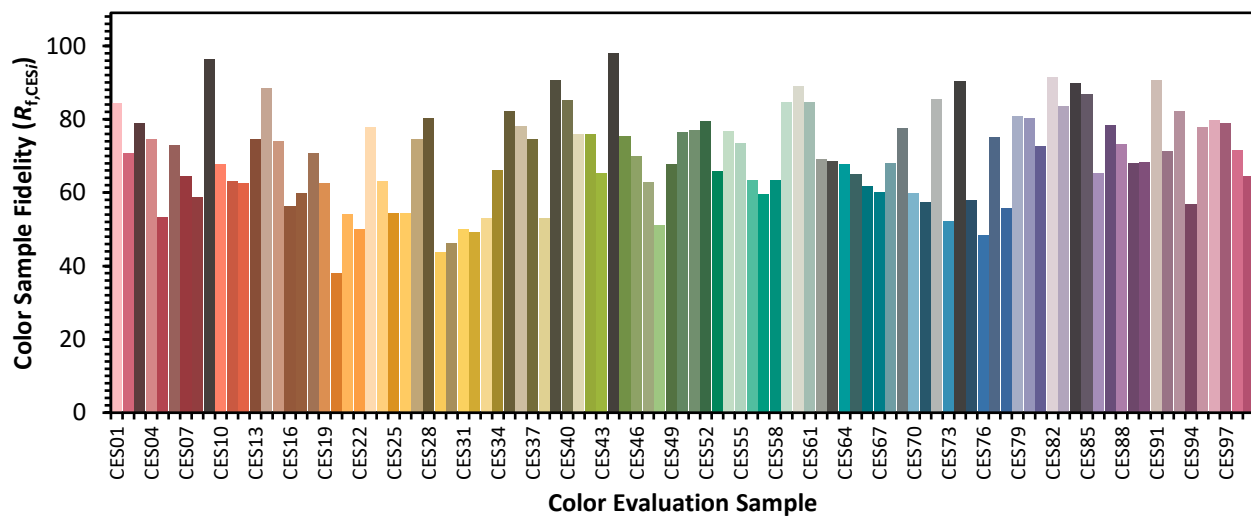


REPORT NUMBER: SP1-1908-441-1-R4

TM-30-18

**Individual Sample Fidelity Index ( $R_{f,i}$ )**

|            |            |            |            |
|------------|------------|------------|------------|
| CES01 = 86 | CES26 = 54 | CES51 = 77 | CES76 = 48 |
| CES02 = 63 | CES27 = 74 | CES52 = 80 | CES77 = 75 |
| CES03 = 31 | CES28 = 80 | CES53 = 66 | CES78 = 56 |
| CES04 = 71 | CES29 = 44 | CES54 = 77 | CES79 = 81 |
| CES05 = 50 | CES30 = 46 | CES55 = 74 | CES80 = 80 |
| CES06 = 52 | CES31 = 50 | CES56 = 63 | CES81 = 73 |
| CES07 = 42 | CES32 = 49 | CES57 = 60 | CES82 = 91 |
| CES08 = 41 | CES33 = 53 | CES58 = 63 | CES83 = 84 |
| CES09 = 29 | CES34 = 66 | CES59 = 85 | CES84 = 90 |
| CES10 = 77 | CES35 = 82 | CES60 = 89 | CES85 = 87 |
| CES11 = 60 | CES36 = 78 | CES61 = 85 | CES86 = 65 |
| CES12 = 66 | CES37 = 75 | CES62 = 69 | CES87 = 78 |
| CES13 = 43 | CES38 = 53 | CES63 = 68 | CES88 = 73 |
| CES14 = 74 | CES39 = 91 | CES64 = 68 | CES89 = 68 |
| CES15 = 71 | CES40 = 85 | CES65 = 65 | CES90 = 68 |
| CES16 = 48 | CES41 = 76 | CES66 = 62 | CES91 = 91 |
| CES17 = 50 | CES42 = 76 | CES67 = 60 | CES92 = 71 |
| CES18 = 57 | CES43 = 65 | CES68 = 68 | CES93 = 82 |
| CES19 = 73 | CES44 = 98 | CES69 = 77 | CES94 = 57 |
| CES20 = 67 | CES45 = 75 | CES70 = 60 | CES95 = 78 |
| CES21 = 88 | CES46 = 70 | CES71 = 57 | CES96 = 80 |
| CES22 = 80 | CES47 = 63 | CES72 = 86 | CES97 = 79 |
| CES23 = 92 | CES48 = 51 | CES73 = 52 | CES98 = 71 |
| CES24 = 91 | CES49 = 68 | CES74 = 90 | CES99 = 64 |
| CES25 = 73 | CES50 = 77 | CES75 = 58 |            |

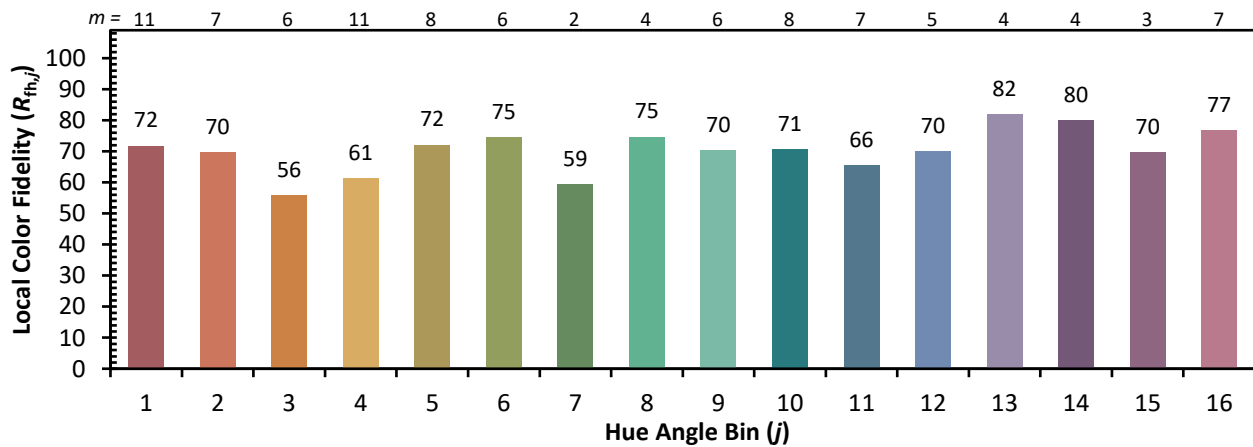
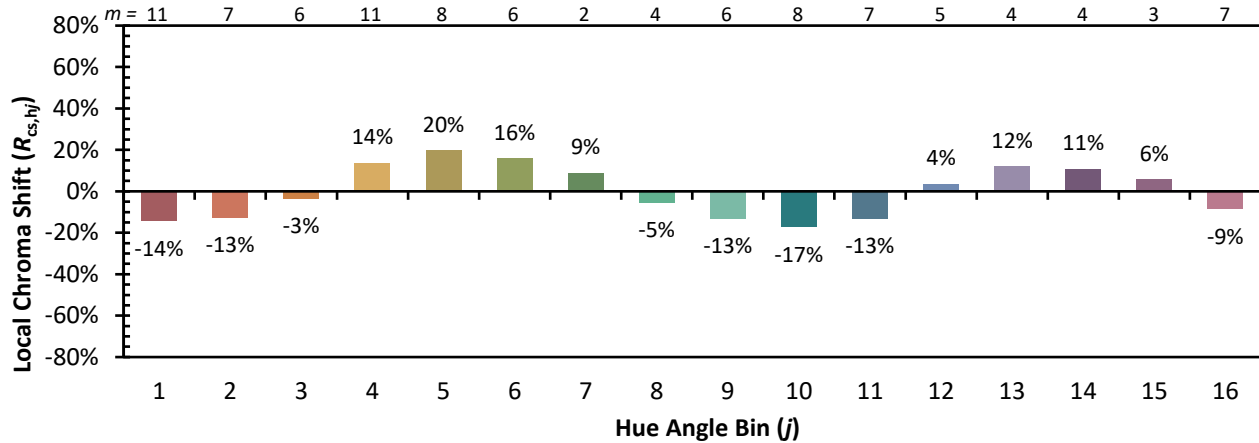




REPORT NUMBER: SP1-1908-441-1-R4

TM-30-18

Color Rendition by Hue-Angle Bin



REPORT NUMBER: SP1-1908-441-1-R4

TM-30-18

Measure Comparisons



(END OF REPORT)